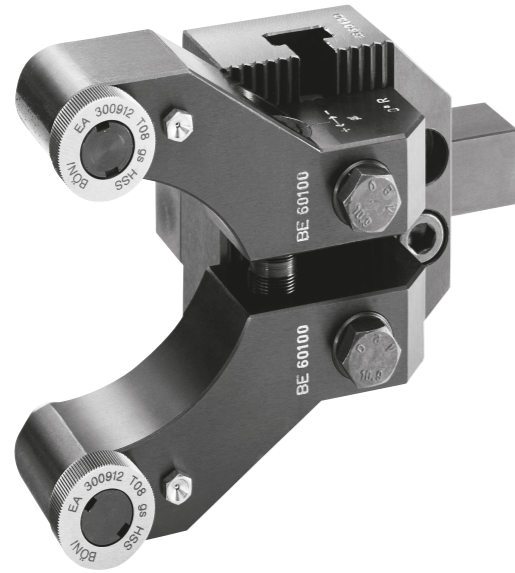


**B100** THE LARGE ONE

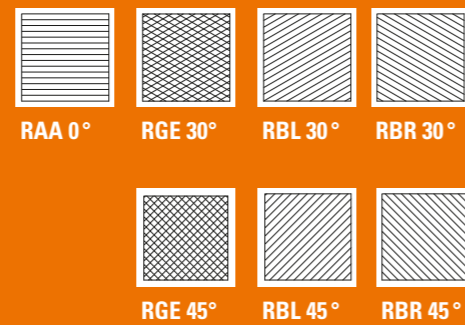


**PRODUCT DETAILS**

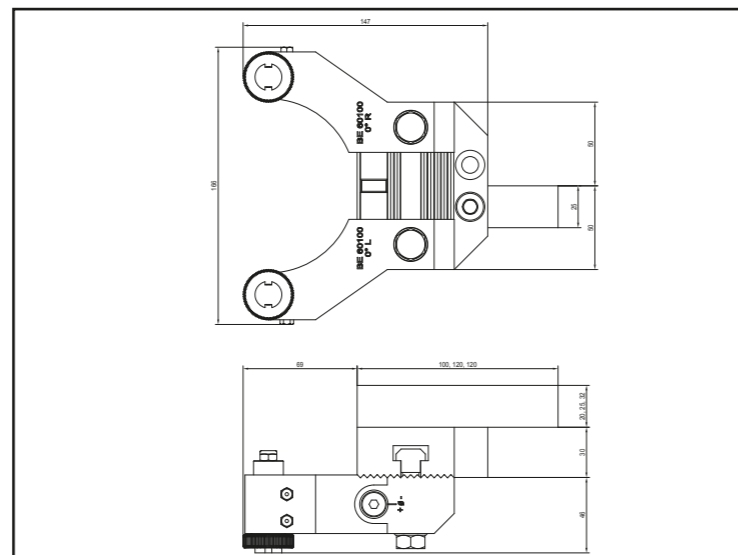
- Modular knurling tool for CNC or conventional lathes.
- Knurling range diam. 60–100mm
- Square shaft 20 x 20mm, 25 x 25mm or 32 x 32mm
- Selection between knurl forming or knurl cutting by applying modular slider sets for 0°, 30° or 45°.
- Knurling wheels arranged in needle roller bearing via bearing shaft.
- No bouncing or moving away of the workpiece.
- Tangential functioning, consequently no pressure on working or transverse spindle of the machine.
- Increased wear resistance thanks to special surface hardening.
- Machining direction as plunge knurling in x-axis and feed knurling in z-axis.
- Knurling profiles: RAA 0°, RGE 30° or RGE 45°.
- For knurling wheels sized diam. 30 mm: BO, SA, SR, SL, EBO, EA

**KNURLING PROFILE**

The modular construction allows for fast changeover of the tool. The clamping shaft and the knurling bar are the basis on which the slider sets are assembled. Depending on the material and type of knurling, slider sets of 0°, 30° or 45° can be selected.



**DIMENSION**



**TECHNICAL DETAILS**

Basis	Number	Drawing	Knurling wheels
Clamping shaft 20x20mm	B2020/100		
Clamping shaft 25x25mm	B2525/100		
Clamping shaft 32x32mm	B3232/100		
Knurling rail working range Ø 60–100mm	BS60100		
Knurling slide	Number	Drawing	Knurling wheels
Knurling slide 0°, working range Ø 60–100mm	BE60100		Knurling wheels diam. 30
Knurling slide 30°, working range Ø 60–100mm	BG60100		Knurling wheels diam. 30
Knurling slide 45°, working range Ø 60–100mm	BK60100		Knurling wheels diam. 30