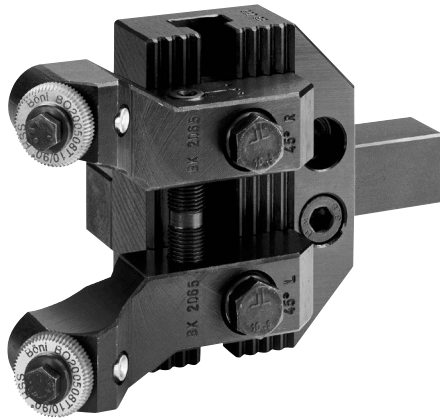
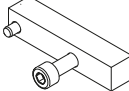
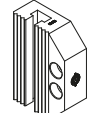
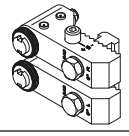
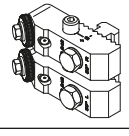
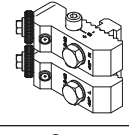
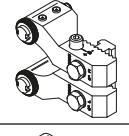
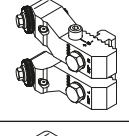
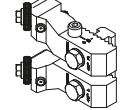


B65 THE MEDIUM ONE



TECHNICAL DETAILS

Basis	Number	Drawing	Knurling wheels
Clamping shaft 16 x 16mm	B1616		
Clamping shaft 20 x 20mm	B2020		
Clamping shaft 25 x 25mm	B2525		
Knurling rail working range Ø 3–65mm	BS365		
Knurling slide	Number	Drawing	Knurling wheels
Knurling slide 0°, working range Ø 3–42mm	BE342		Knurling wheels diam. 20
Knurling slide 30°, working range Ø 3–42mm	BG342		Knurling wheels diam. 20
Knurling slide 45°, working range Ø 3–42mm	BK342		Knurling wheels diam. 20
Knurling slide 0°, working range Ø 20–65 mm	BE2065		Knurling wheels diam. 20
Knurling slide 30°, working range Ø 20–65mm	BG2065		Knurling wheels diam. 20
Knurling slide 45°, working range Ø 20–65mm	BK2065		Knurling wheels diam. 20