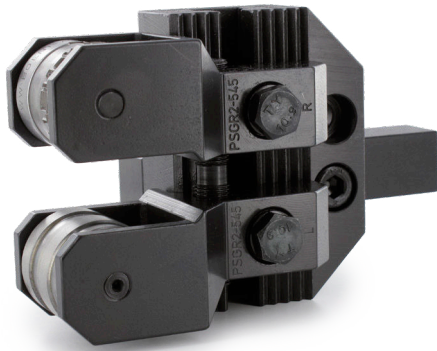


# PWGR2 HEAVY SENSIBLE

The tool for thin, unstable workpieces and/or pipes.  
Marking Tool, fork guided.



Resilient marking tool



Marking wheel with segments    Marking wheel with solid engraving

**Field of application:**

- Marking on periphery.
- Marking in grooves.
- Marking on hexagonal surfaces (only by means of C axis or spindle indexing).
- Marking range Ø5–Ø45mm.

**Types of machines:**

- Suitable for all conventional and CNC controlled lathes.
- Cam controlled automatic lathes.
- Multispindle automatic lathes.

**Properties:**

- Marking system with return spring.
- Independent of workpiece diameter.
- Marking of unstable and thin-walled workpieces possible.
- Marking directly on a corner (collar) to a limited extent only.
- Marking behind a collar or in a groove to a limited extent only.

**Tool:**

- Special surface hardening allows for increased wear resistance of tool.
- Swing (center height) integrated in tool.

**Marking wheels engraved from solid:**

- Marking wheel dia-30mm, HSS, 4/401511-12. Max. type height 14mm (depending on material).
- Marking wheel dia-35mm, HSS, 4/402435. Max. type height 14mm (depending on material).
- Additional special marking wheels available on request.

**Marking wheels for exchangeable segments:**

- Marking wheels 4/401866R and 4/401866L for segments dia. 30mm. Max. type height 4mm.
- Marking wheels 4/402405R and 4/402405L for segments dia. 35mm. Max. type height 4mm.
- Additional special marking wheels for exchangeable segments available on request.

**TOOL VARIANTS**

Tool	Tool type	Execution	Shank size
PWGR2-R-1616	PWGR2	Right	16 x 16mm
PWGR2-L-1616	PWGR2	Left	16 x 16mm
PWGR2-R-2020	PWGR2	Right	20 x 20mm
PWGR2-L-2020	PWGR2	Left	20 x 20mm
PWGR2-R-2525	PWGR2	Right	25 x 25mm
PWGR2-L-2525	PWGR2	Left	25 x 25mm

**ITEM NUMBER SYSTEMATICS**

PWGR2-R-2020	PWGR2	-->	Tool type
	R	-->	Right execution
	2020	-->	Shank size 20 x 20mm

**DIMENSION**

